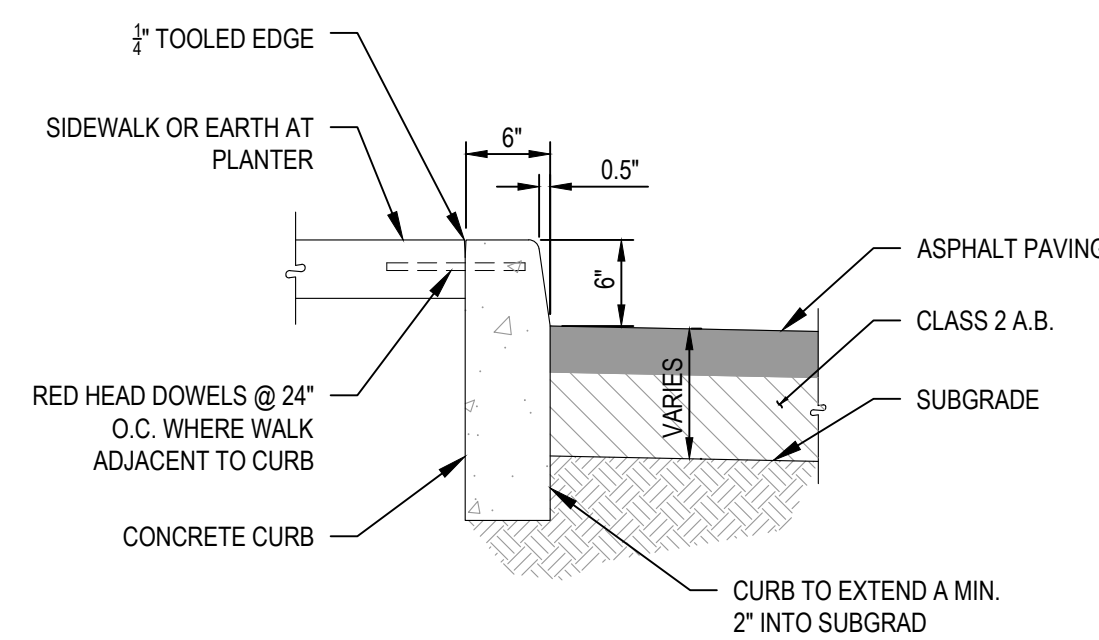


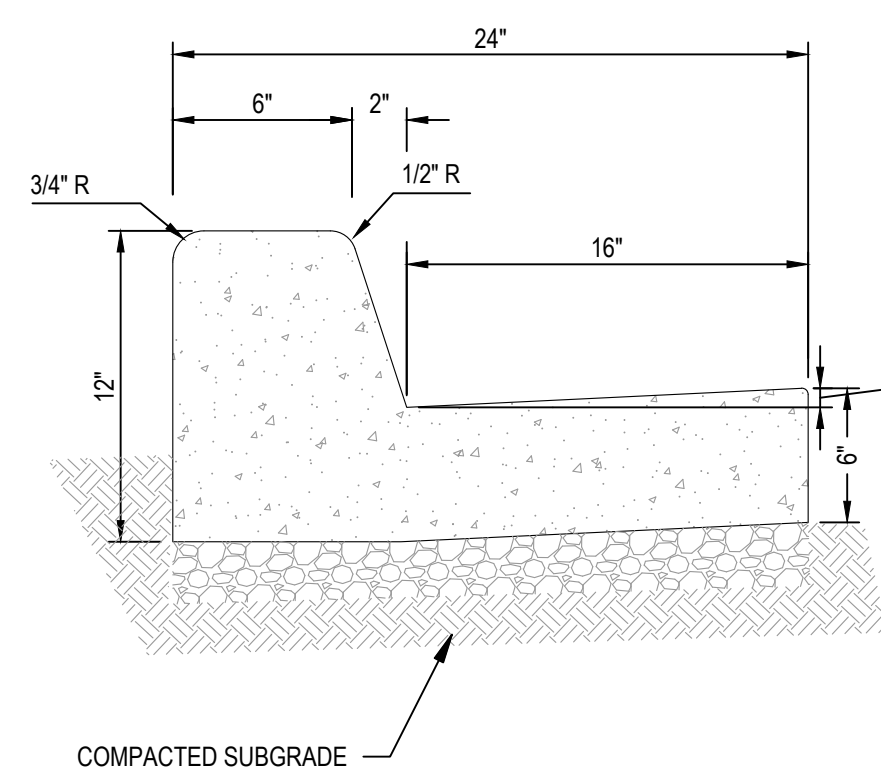
# PC EXHIBIT K



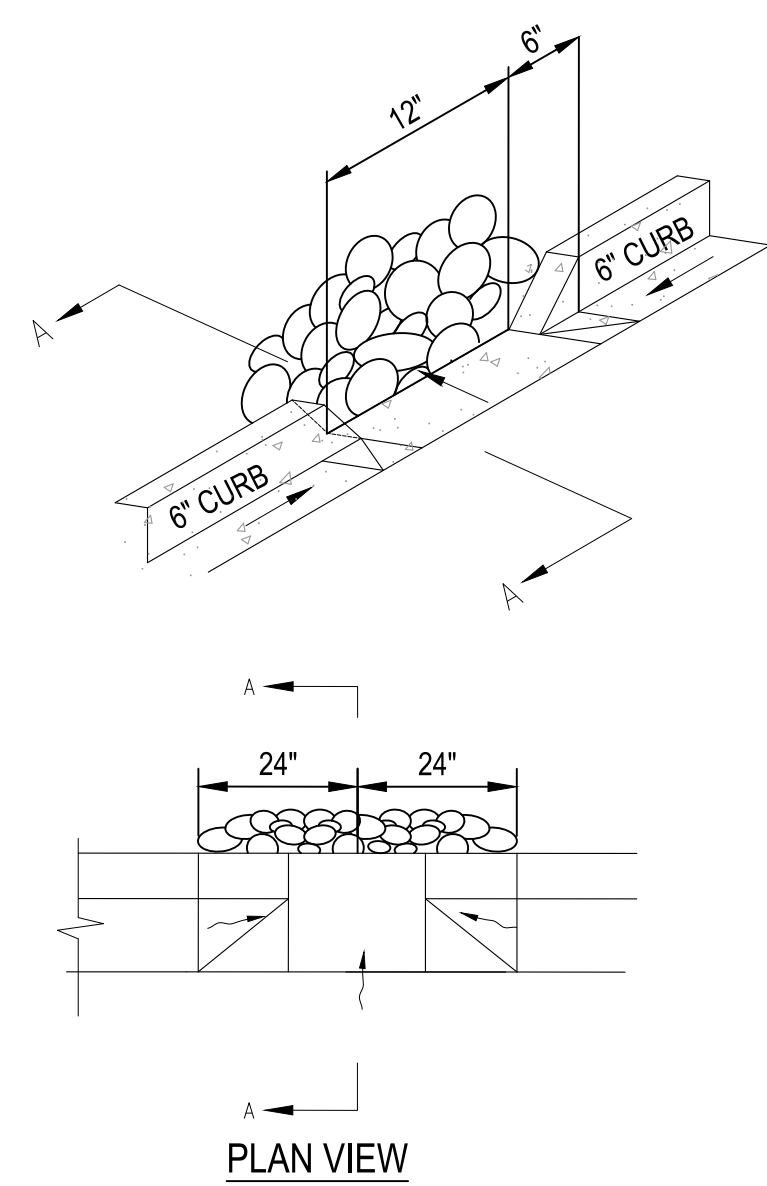
**NOTES:**

1. PROVIDE EXPANSION JOINTS @ 25' O.C. MAX AND CURVES AND TANGENTS.
2. BASE OF CURB TO REST ON COMPACTED FILL SACK FINISH EXPOSED SURFACES.

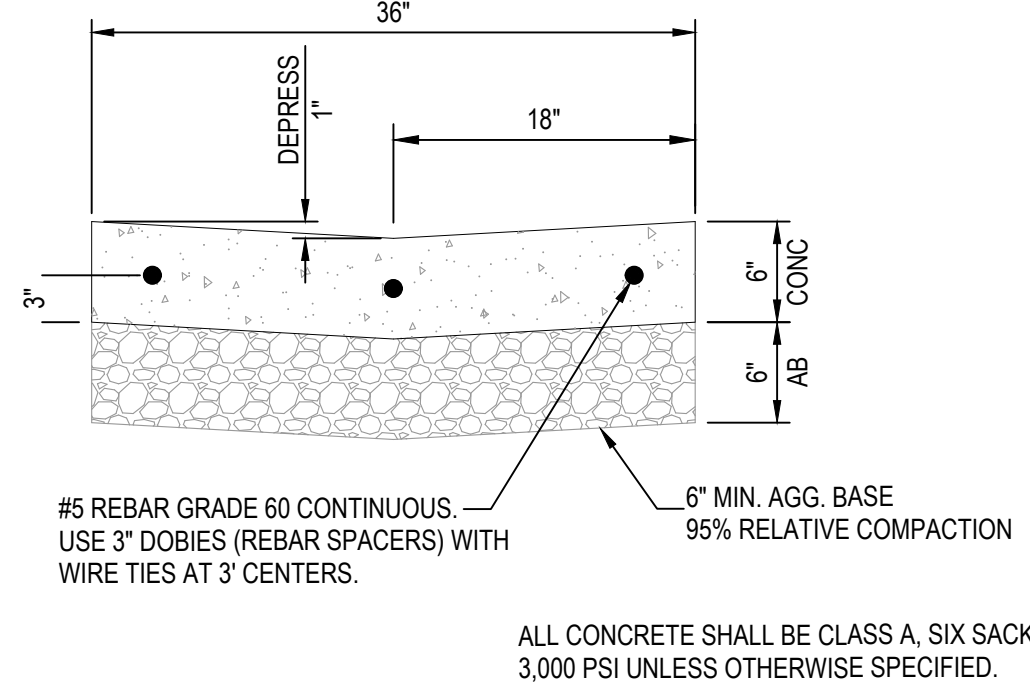
**1 BARRIER CURB** NTS



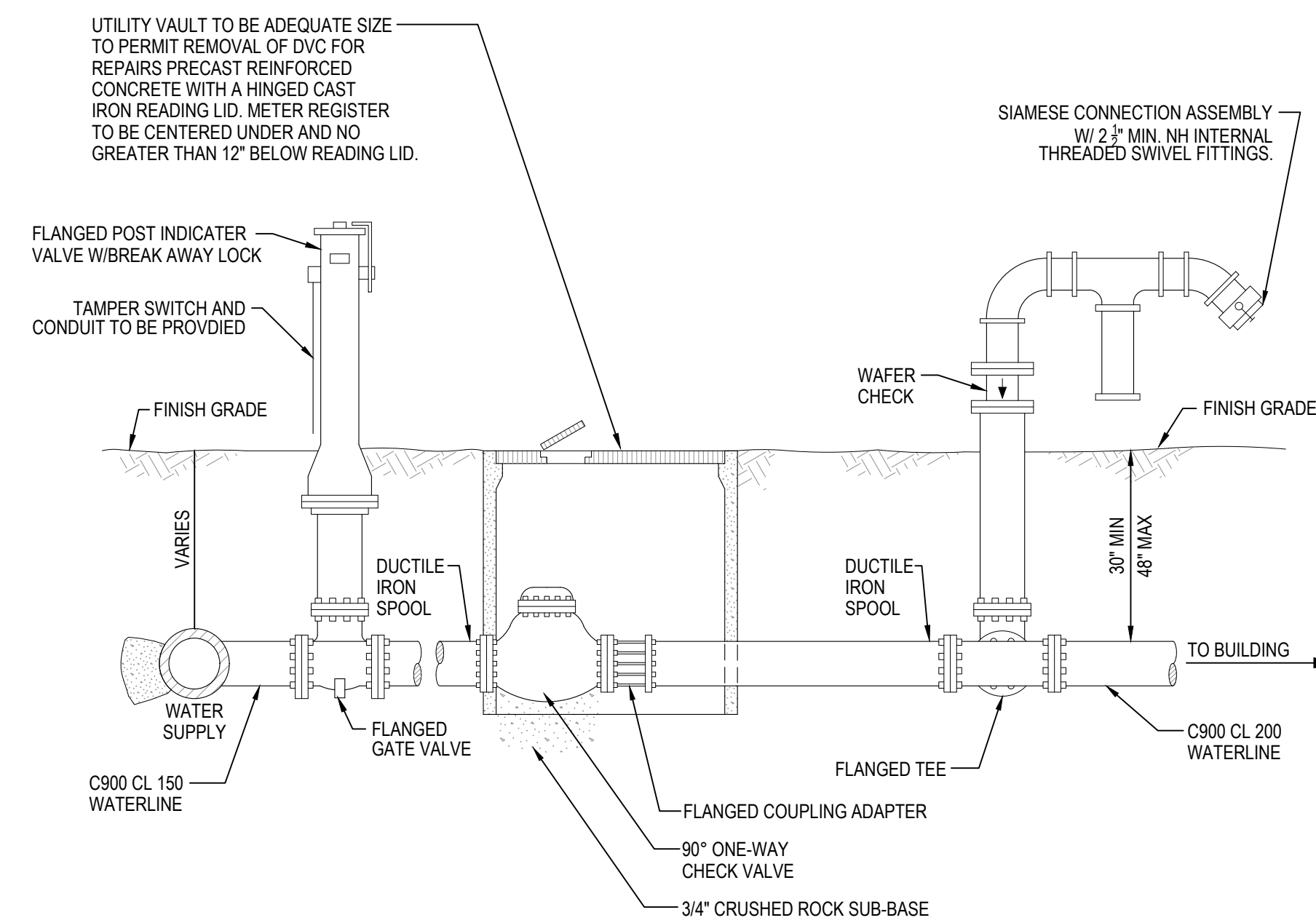
**2 ON-SITE VERTICAL CURB AND GUTTER** NTS



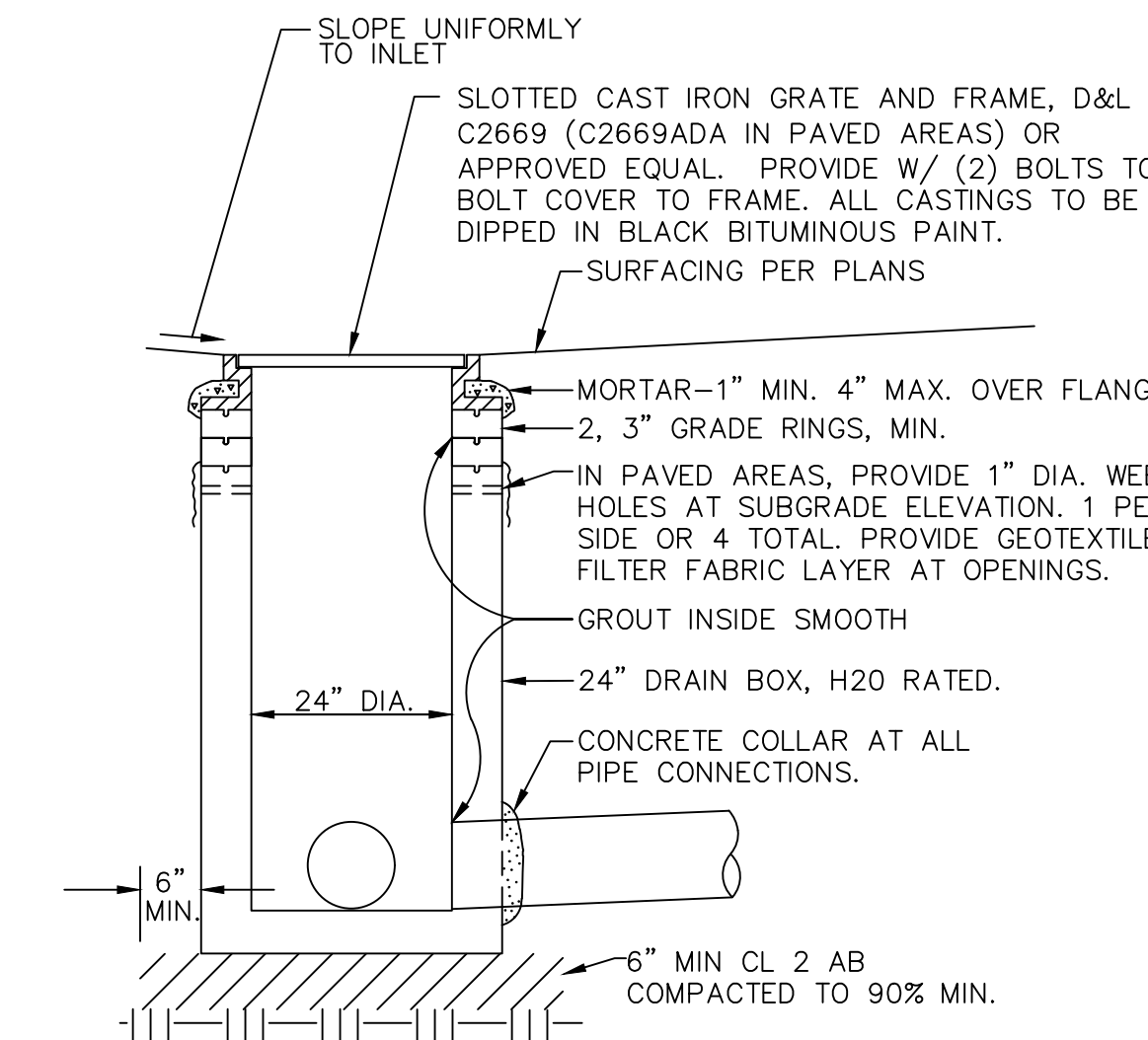
**3 CURB CUT** NTS



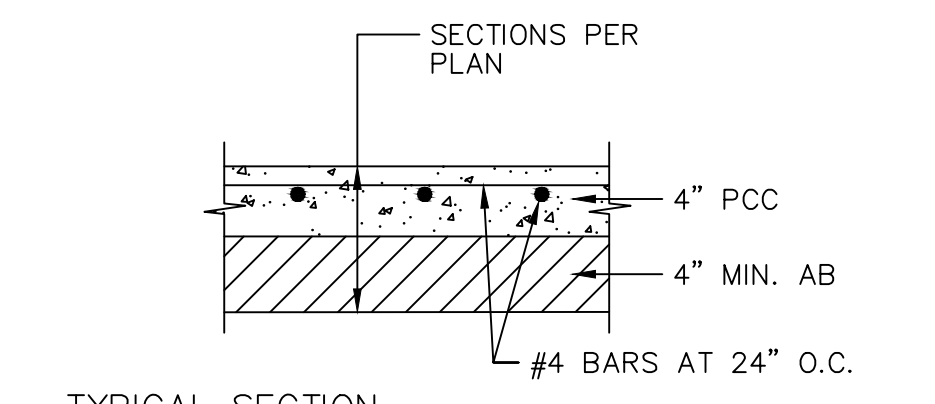
**4 VALLEY GUTTER** NTS



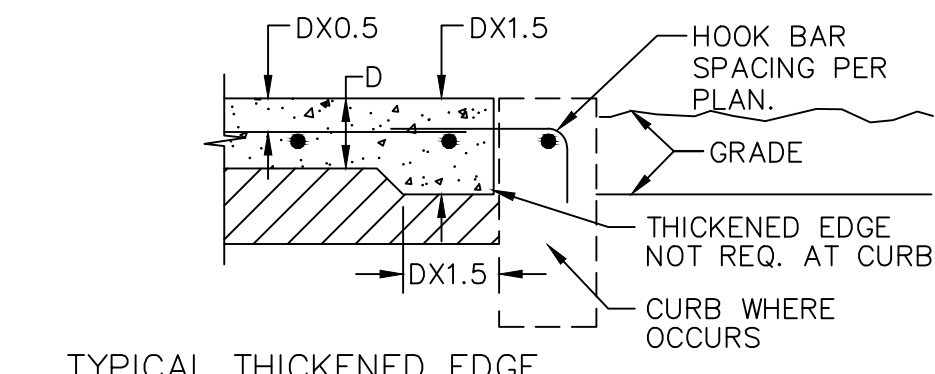
**5 PIV, CHECK VALVE & FDC** NTS



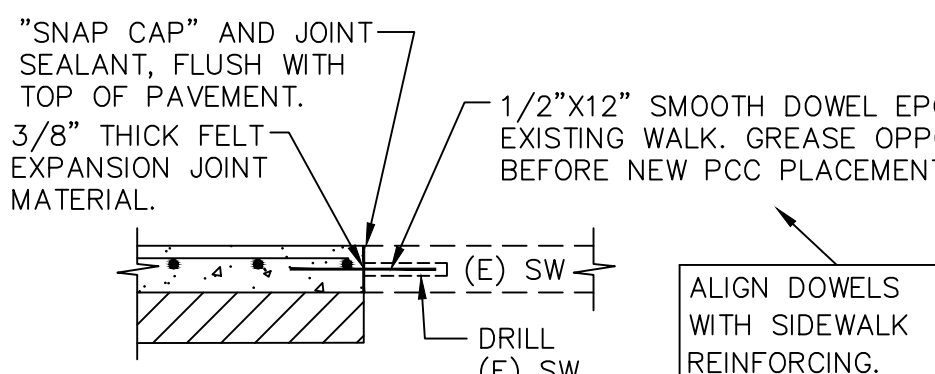
**6 DROP INLET** NO SCALE NTS



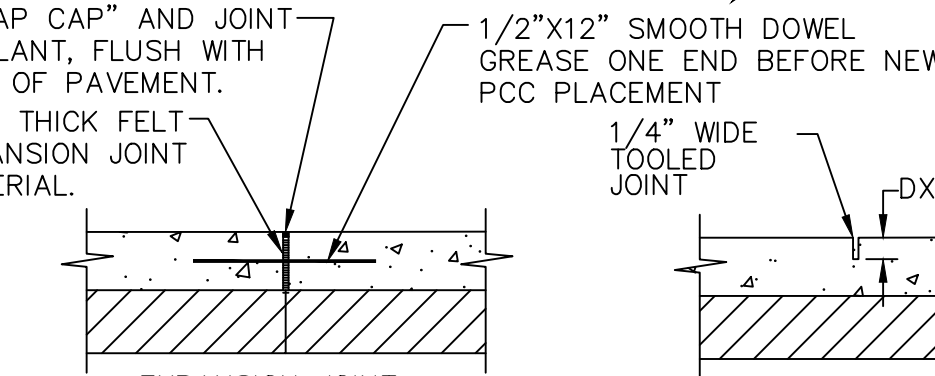
TYPICAL SECTION



TYPICAL THICKENED EDGE



CONNECTION TO (E) CONCRETE

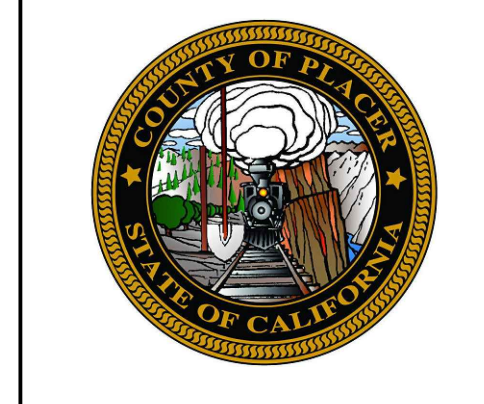


TYPICAL JOINTS

NOTE: PROVIDE FELT EXPANSION JOINTS AT 20 FEET O.C. PROVIDE CONTROL JOINTS AT 10 FEET O.C.

**7 CONCRETE SIDEWALK** NTS

RESERVED FOR STATE FIRE MARSHAL



**C/S BUILDERS**



700 Alhambra Blvd.  
Sacramento, California 95816  
Main: (916) 234-3731  
Fax: (916) 279-9110

© Copyright 2022

SB844  
COUNTY OF PLACER  
MEDIUM SECURITY & VOCATIONAL TRAINING  
11751 GO FOR BROKE ROAD, ROSEVILLE, CA 95678  
California State Fire Marshal Permit # 22-N-2760-CP-DR

NO.	REVISION	DATE

PROJECT NO.: 2019.042  
DATE: 11/7/2022  
DESIGNED BY: DVG  
DRAWN BY: CEC  
APPROVED BY: CDK

SHEET TITLE:  
BUILDING A - MSVTF  
CIVIL  
Sheet Name

**DETAILS - 1**

SHEET NUMBER:  
**20 OF 21**



